



AUSTRALIAN INTERNATIONAL ACADEMY

# Student Uniform Policy

(Includes hair styles, shoes, jewellery, nail polish, hats etc)

Advancement  
Determination  
Faith

1. All students are required to wear the school uniform whilst at, and traveling to and from the school.
2. Uniforms must be kept **neat, clean and in good condition** at all times. Damaged or shabby items of uniform are to be replaced.
3. The uniform is to be properly presented and worn correctly at all times.
  - a. Shirts must be kept tucked in at all times, even when worn under the jumper. (This is not enforced when students are engaged in sporting activities at recess and lunchtime)
  - b. Jumpers are not to be worn around the waist.
  - c. Only a white singlet or tee-shirt may be worn under the shirts.
  - d. No undergarments should be seen below sleeves of shirts or at neck line of shirts.
  - e. The uniform is not permitted to be worn with 'non-uniform' clothing.
4. The school blazer (high school students) must be worn for all official school functions, including excursions whether on or off campus. This arrangement may only be varied by an official announcement.
5. The blazer must be worn to and from school and kept on until the end of assemblies every morning. The blazer must be worn home in the afternoon. This arrangement may only be varied by an official announcement.
6. Navy blue scarves, beanies and gloves may be worn during the winter months. Finger less (cut off) gloves are not acceptable.
7. Shoes must be **black polishable leather school shoes**. Runners, boots and shoes with Velcro are not regulation school shoes. Shoes are not permitted to have heels higher than 3 cm.
8. Boys must wear long grey school trousers. Trousers must be fully hemmed, without slits.
9. The school tie is to be worn at all times unless varied by an official announcement. The collar button on the shirt should be done up and the tie should cover the top button.
10. School uniform includes hair, jewellery, make-up and hats.
  - An unobtrusive wrist watch is the only permitted item of jewellery to be worn.
  - Smart watches are not permitted at school and if seen will be confiscated
  - Facial piercing and stud jewellery is not acceptable.
  - Make-up and nail polish is not permitted.
  - Only school approved AIA hats are to be worn for sporting activities and outside in the yard
11. All female students in years 7 – 12 must cover their entire hair. A plain white underscarf (navy blue underscarf for Year 11 and 12 girls) and white school scarf must be worn. The school scarf should drape over the chest and pinned at the shoulder. The scarf should not hang loosely.
12. Primary school girls hair needs to be in a pony tail or plait if long and brushed neatly away from the eyes/face if short. Only blue hair ribbons or hair bands are an acceptable colour.
13. Facial hair must be neat and tidy.
14. Hair (Boys)
  - Normal schoolboy haircuts of an acceptable length are required. Hairstyles should not be extreme.
  - Hair must be off the collar and when forward it must be out of the eyes.
  - Hair is to be well groomed and kept clean and tidy.
  - Hair should be kept in its natural colour (no variations or extremes to normal hair colour is acceptable).
  - Extreme hairstyles (e.g. tails, Mohawks, spikes, corn rows, undercuts, dreadlocks, big afros, indie cuts, ponytails and long hair) are not permitted.

**The ultimate judgment on the appropriate hairstyle must rest with the Principal and or Deputy Principal.**

**Extreme hairstyles are not tolerated and could lead to boys being sent home**

A student who attends the school without full, correct uniform must report immediately to their Form Teacher and/or Student Management Coordinator.

Students not in full school uniform and without a Uniform pass will be asked to remove the non-uniform item. If it cannot be removed students will be sent home to change following a phone call to the student's family.

#### **Breach of uniform policy:**

- A written note in the student's planner and signed by a parent is required on the day that the student is out of uniform.
- Students who breach the Academy uniform policy will:
  - be issued with a uniform pass for the first breach providing they have an acceptable reason.
  - be issued with an after-school detention for the second breach.
- If a student regularly breaches the uniform policy, the Academy will contact the parents and ask that the student be collected from the Academy or bring the correct item of clothing to the Academy. **The student will not be permitted to go into class until they are in full and correct uniform.**

•

#### **UNIFORM (COMPULSORY)**

- Students are expected to wear the complete Academy uniform whilst at school, travelling to and from school and when attending all Academy assemblies, functions and excursions unless instructed otherwise.
  - Winter uniform accessories – navy blue scarf and gloves (finger less gloves are not acceptable)
  - All Academy uniform items must be purchased from the school Uniform Shop and have the Academy logo.
  - Boys' trousers must be identical in style and colour to those purchased from the uniform shop. Other colours or styles are not acceptable.
  - No long sleeved items to be worn under short sleeved items. Shirts must be tucked in at all times (even when worn under the jumper).
  - No slacks/track suit pants to be worn under the skirt.
  - Shirts must be tucked in when worn under the jumper.
-

# PRIMARY UNIFORM

BOYS UNIFORM (Available from Uniform Shop)	GIRLS UNIFORM (Available from Uniform Shop)
<b>SUMMER</b> <ul style="list-style-type: none"> <li>• Grey tailored school trousers</li> <li>• AIA white long or short sleeved shirt (square cut)</li> <li>• Plain grey socks</li> <li>• Black polish able leather lace-up shoes</li> </ul>	<b>SUMMER</b> <ul style="list-style-type: none"> <li>• AIA Blue and White Pinafore dress</li> <li>• Plain white ankle high socks</li> <li>• Blue school scarf and blue under scarf</li> <li>• Black polish able leather lace-up shoes (heels no higher than 3cm)</li> </ul>
<b>WINTER</b> <ul style="list-style-type: none"> <li>• Grey tailored school trousers</li> <li>• AIA white long sleeved shirt (square cut)</li> </ul>	<b>WINTER</b> <ul style="list-style-type: none"> <li>• AIA Blue and White Pinafore dress</li> <li>• AIA white long sleeved shirt (Peterpan Collar)</li> </ul>
<ul style="list-style-type: none"> <li>• AIA Navy blue jumper</li> <li>• Plain grey socks</li> <li>• Black polish able leather lace-up shoes</li> </ul>	<ul style="list-style-type: none"> <li>• AIA Navy blue jumper</li> <li>• Blue school scarf and blue under scarf</li> <li>• Plain Navy Blue knee high socks or tights</li> <li>• Black polish able leather lace-up shoes (heels no higher than 3cm)</li> </ul>
SPORTS UNIFORM	
<ul style="list-style-type: none"> <li>• AIA Navy blue and white track suit</li> <li>• AIA Navy blue and sky blue polo top</li> <li>• AIA Navy blue bucket hat</li> <li>• White sports socks</li> <li>• Sports shoes</li> </ul>	<ul style="list-style-type: none"> <li>• AIA Navy blue and white track suit</li> <li>• AIA Navy blue and sky blue polo top (girls with long sleeves)</li> <li>• AIA Navy blue bucket hat</li> <li>• White sports socks</li> <li>• Sports shoes</li> </ul>

# SENIOR SCHOOL UNIFORM

GIRLS (Year 7–12)	BOYS (Year 7–12)
AIA Navy school blazer AIA Skirt (ankle length) AIA senior girls blouse Navy jumper White school scarf and white underscarf (navy underscarf for Year 11 & 12) Black polishable leather lace-up shoes (heels no higher than 3 cm) White socks	AIA Navy blue school blazer Grey trousers AIA white long or short sleeved shirt AIA school tie Navy Cap, no other cap is acceptable Black polishable leather lace-up shoes Belt – black (overhang is to be tucked into the trouser belt loops) GREY socks
SPORTS UNIFORM (Years 7–10)	SPORTS UNIFORM (Years 7–10)
AIA Track suit AIA Sport polo long sleeve AIA Sport pants AIA Sport jacket Sports shoes Wide brim hat	AIA Track suit AIA Sport polo long sleeve AIA Sport pants AIA Sport jacket Sports shoes School cap

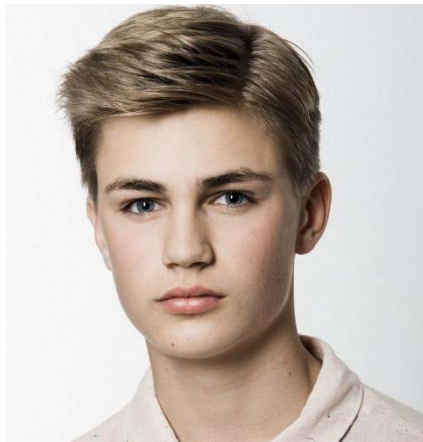
**ACCEPTABLE SCHOOL SHOES**



**UNACCEPTABLE SCHOOL SHOES**



**EXAMPLES OF ACCEPTABLE HAIR STYLES**



**EXAMPLES OF UNACCEPTABLE HAIR STYLES**

